

Use these easy formulas to estimate the potential Return On Investment possible with a Club Max mobile bag storage system.

### Data you will need to know:

1. The cost of a Club Max installation is based on an average of \$100 per bag. *(Note: This is an average cost only - actual costs vary with each installation.)*
2. An average charge to club members for storing bags is \$200 per bag per year. *(Note: This varies in different areas. You can use your own figure in the calculations.)*

Please note this is a method for producing rough estimates only. Each golf course is subject to different economic factors which influence potential profit calculations. For illustration purposes we've used a bag storage capacity increase of 70% which would be the optimum level possible with the Club Max system. You may also want to try other percentage levels which you feel better reflect your Club's situation.

Of course, your NCM sales representative can arrange a precise calculation tailored to your exact specifications.

### Sample Calculation

Assume a golf club has been using a 200-bag storage system and after installing Club Max this is increased by 70% to 340 bags

- (A) New Club Max capacity: .....**340** bags  
 (B) Former storage capacity: .....**200** bags

Potential annual revenue with Club Max: **340 bags @ \$200 per bag = \$68,000**  
 Estimated cost of installing Club Max: **340 bags @ \$100 per bag = \$34,000**

Subtract to obtain **potential extra revenue in first year\***: **\$34,000**  
*\*if extra storage capacity put to full use immediately.*

### Potential extra revenue in subsequent years

Potential annual revenue with Club Max: **340 bags @ \$200 per bag = \$68,000**  
 Annual revenue with former system: **200 bags @ \$200 per bag = \$40,000**  
 Subtract to calculate **potential extra annual revenue per year**: **\$28,000**

### Estimate the Profit Potential for your own Club:

- (A) Potential bag storage capacity  
 with Club Max:.....\_\_\_\_\_ bags  
 (B) Your former storage capacity: .....\_\_\_\_\_ bags

Potential annual revenue with Club Max: \_\_\_\_\_ bags @ \$\_\_ per bag = \$ \_\_\_\_\_  
 Estimated cost of installing Club Max: \_\_\_\_\_ bags @ \$100 per bag = \$ \_\_\_\_\_

Subtract to get **potential extra revenue in first year\***: \$ \_\_\_\_\_  
*\*if extra storage capacity put to full use immediately.*

### Potential extra revenue in subsequent years

Potential annual revenue with Club Max: \_\_\_\_\_ bags @ \$\_\_ per bag = \$ \_\_\_\_\_  
 Annual revenue with former system: \_\_\_\_\_ bags @ \$\_\_ per bag = \$ \_\_\_\_\_  
 Subtract to calculate **potential extra annual revenue**: \$ \_\_\_\_\_

# Please complete and return these two pages to receive a formal quote on a Club Max Mobile Storage Rack System.

Course Name: \_\_\_\_\_

Contact Name: \_\_\_\_\_

Telephone: \_\_\_\_\_

Fax: \_\_\_\_\_

## INFORMATION CHECKLIST:

check



1. Provide a fully dimensioned sketch of the existing bag storage room.

2. Layout should include;

- All door openings and direction of swing.
- All window openings.
- The location of any heating, plumbing, electrical panels, etc.

3. Overall ceiling height(s) have been noted on the layout.

4. Any restrictions to the overall ceiling height such as sprinkler systems, ductwork, plumbing, bulkheads, lighting fixtures etc. should be noted on the layout.

5. Note the current bag capacity of the storage area.

6. Note the **NEW** bag capacity objective.

7. The condition and type of floor should be recorded such as;

\_\_\_\_\_ • poured concrete as opposed to wood or tile.

\_\_\_\_\_ • level and smooth finish.

\_\_\_\_\_ • will some preparation to the floor be necessary? How much?

8. Indicate the total area in which CLUB MAX MOBILE BAG STORAGE UNITS are to be installed.

Do you want to utilize the total area or do you want to reserve some space for work area?

*Please indicate on the layout, the area that you wish to utilize or reserve.*

9. Please indicate approximately when you plan on doing your renovations?



27 Ryan Place, Brantford, Ontario, Canada N3S 7S1  
Tel: 1 800 220 • 6290 Fax: 1 800 850 • 4680  
E-mail: [patrick.fisher@ncmgolf.com](mailto:patrick.fisher@ncmgolf.com)





Ref. Quote Number: \_\_\_\_\_

Ref. Order Number: \_\_\_\_\_

Golf Course Name: \_\_\_\_\_

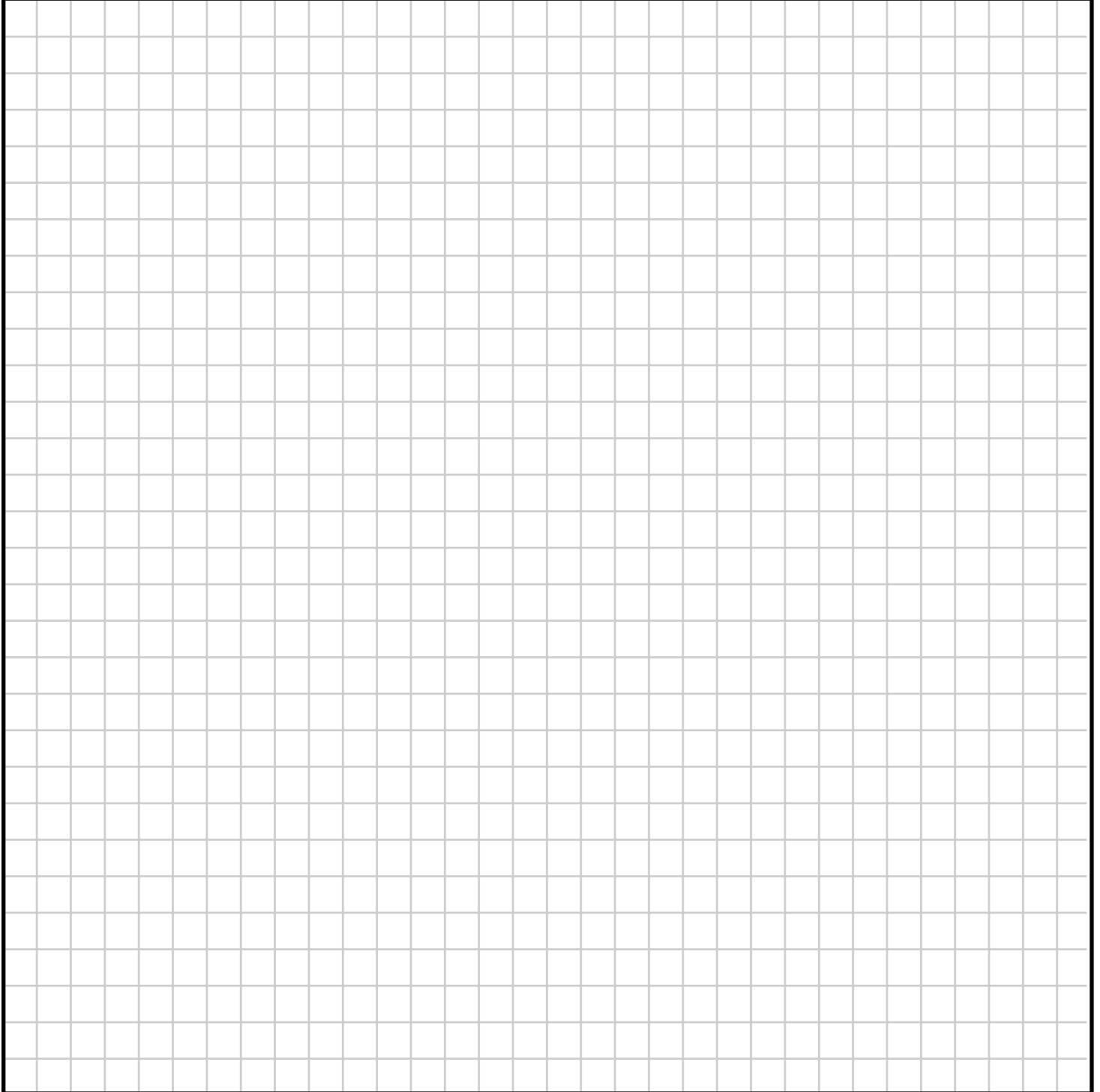
Date: \_\_\_\_\_

Contact Name: \_\_\_\_\_

Current Bag Capacity: \_\_\_\_\_ Bags

Desired Bag Capacity: \_\_\_\_\_ Bags

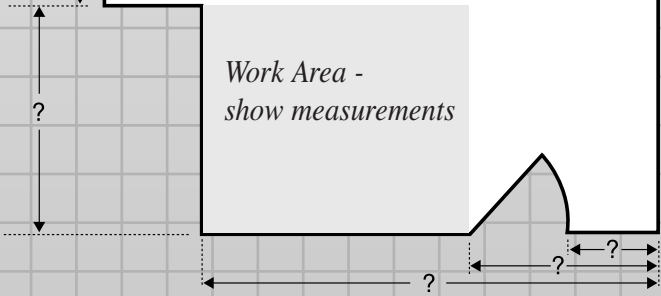
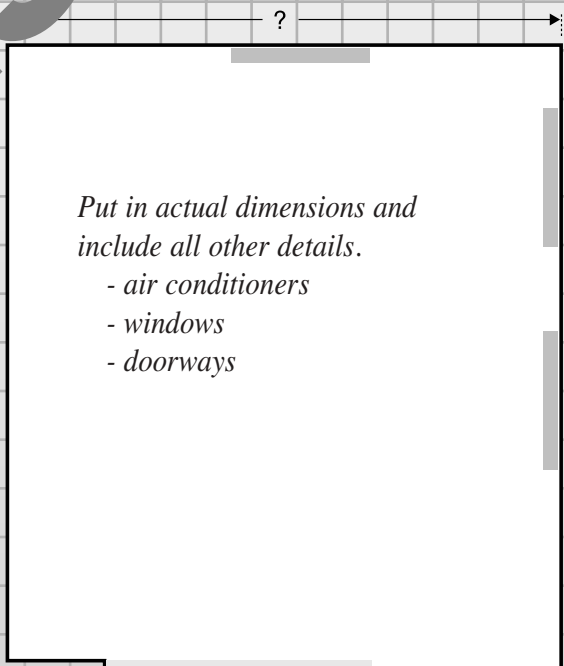
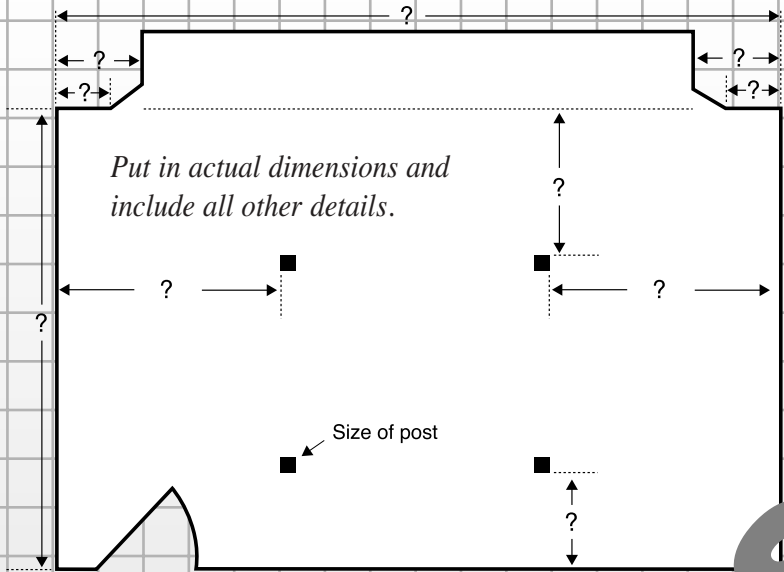
*Use this page to prepare a fully dimensioned sketch of your existing bag storage room. For reference see typical examples on back page.*



Drawing not to scale

Prepared by: \_\_\_\_\_ Date: \_\_\_\_\_

**SAMPLES ONLY**



These are typical floor plans showing the kind of information we need to prepare a quote on a Club Max installation.



27 Ryan Place, Brantford, Ontario, Canada N3S 7S1  
Tel: 1 800 220 • 6290 Fax: 1 800 850 • 4680  
E-mail: [patrick.fisher@ncmgolf.com](mailto:patrick.fisher@ncmgolf.com)

